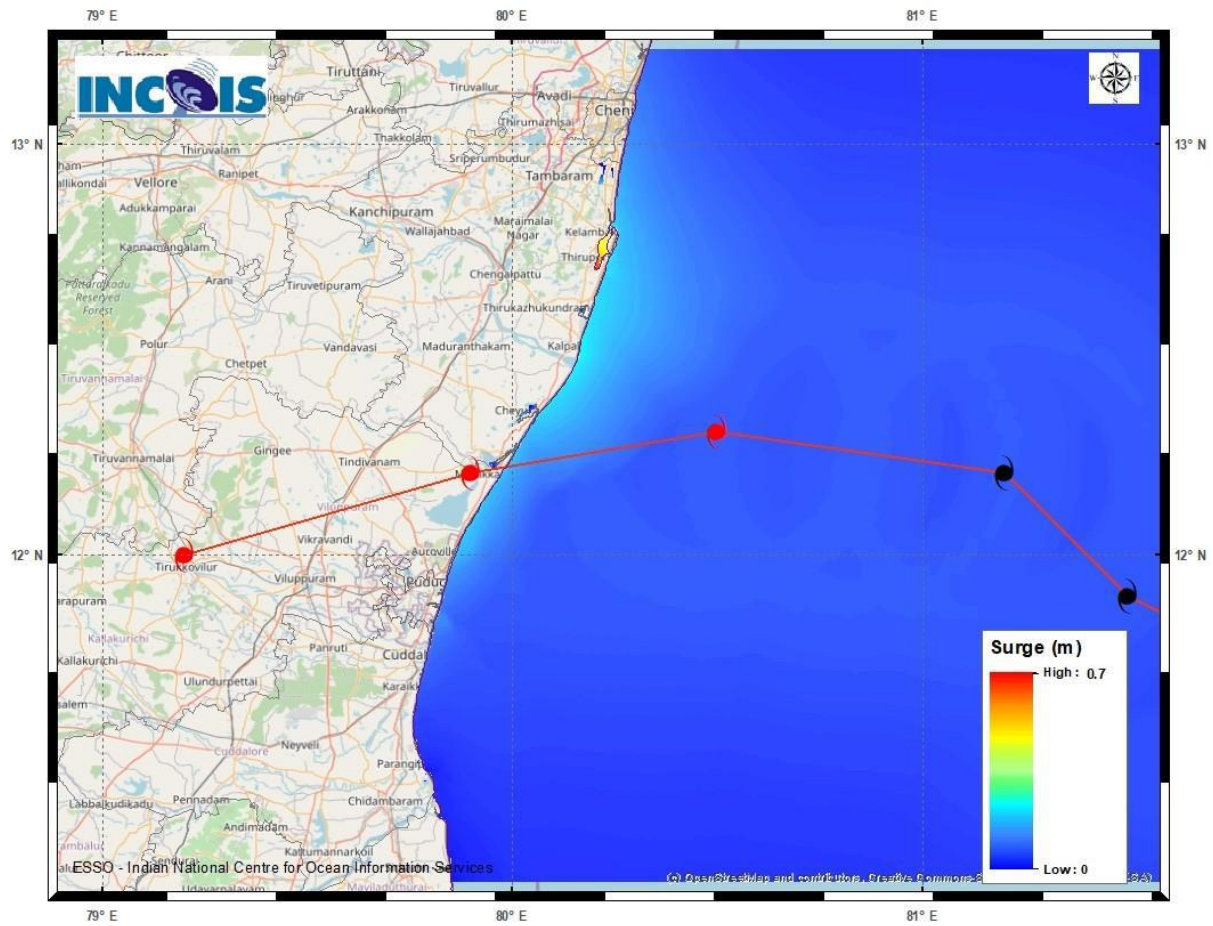


STORM SURGE GUIDANCE BASED ON 03UTC OF 30th November, 2024

Storm surge Warning :

Storm surge of about 1 meter height above the astronomical tide is likely to inundate the low lying areas of the coastal districts of north Tamil Nadu, Puducherry and adjoining south Andhra Pradesh during the time of landfall.

Storm Surge Warning Graphics based on Forecast Track



| DISTRICT | STATE / UNION TERRITORY | NEAREST PLACE OF HABITATION | STORM SURGE (m)* | EXPECTED INUNDATION EXTENT (km) |
|---------------------|-------------------------|-----------------------------|------------------|---------------------------------|
| <u>Kancheepuram</u> | <u>Tamil Nadu</u> | <u>Muthukadu</u> | <u>0.2-0.7</u> | <u>Upto 0.13</u> |